

FS23M Series

Dual Failsafe Right Angle Electric Bolt Locks



Designed and patented by SDC, Spacesaver® right angle bolt locks represent a fundamental innovation in electric locking technology for access control applications. Spacesaver® bolts project at right angles to the lock mechanism, allowing installation of Spacesaver® locks, by means of a simple mortise cutout, in virtually any standard frame, or in most door lock stiles. With the entire lock concealed, aesthetic acceptability is complete, security is greater and installation in old or new construction is fast, easy and economical.

FS23M locks are equipped with nylon bolts with hardened magnet cores, specification grade solenoids and automatic relock ball switches. Bolts rotate freely, making attempts to tamper or cut extremely difficult. Specification grade solenoids facilitate superior overall performance in both force and longevity, when compared to commercial grade solenoids. Automatic relock ball switches keep the bolt retracted while the door is open. The door depresses the ball switch on closure, causing the bolt to project automatically, locking the door. Additionally, ball switches are field adjustable to compensate for wide door gap and bidirectional to permit use on swinging and sliding doors.

Dual failsafe bolt locks are available only from SDC. Conventional failsafe locking bolts rely solely on a spring to retract the bolt while the FS23M bolt will unlock with or without the assistance of the spring. **This is the only electric bolt lock listed by the California State Fire Marshal for locking of perimeter entrance and emergency exit doors after hours.** Large repelling magnets are located within the bolt and strike. Should the spring fail, repelling magnets eject the bolt from the strike, unlocking the door.



MODELS

FS23MI Right Angle Bolt Lock, Dual Failsafe



STANDARD FEATURES

- Concealed mortise right angle design
- Nylon bolt with hardened magnet core
- Repelling bolt and strike magnet
- Specification grade solenoid
- Automatic relock
- Field adjustable and bidirectional automatic relock ball switch
- Mounting tabs included
- Field selectable dual voltage
- Voltage and current spike protection
- Power regulator included



OPTIONAL FEATURES

- Door position status (DPS)
- Bolt position status (BPS)



APPLICATIONS

DUAL FAILSAFE OPERATION

SDC designed and patented FS23M bolt locks are locked when energized. Recommended for safety applications, the door unlocks automatically when power is interrupted by the access control, power failure or a signal from the fire life safety system.

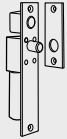
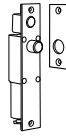
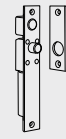
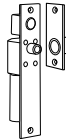
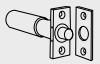
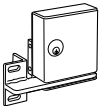


Large repelling magnets are located within the bolt and strike. When power is interrupted the bolt is retracted and held back by a spring. Should the spring fail, repelling magnets eject the bolt from the strike, unlocking the door.

The bolt is made of a lightweight and extremely resilient nylon material. While lack of weight enables the magnet to eject the

bolt, an inherent feature is powerful and smooth operation. The longevity of this lock is unsurpassed compared to electromechanical locks with steel bolts and abrasive metal to metal interaction. Additionally, the nylon bolt boasts 2,500 lbs of strength and is resistant to metal cutting saws with its hardened magnet core

While designed for perimeter applications the performance characteristics of the FS23M make it the first choice for all interior or exterior openings where the use of an electric bolt lock is applicable.

CROSS REFERENCE

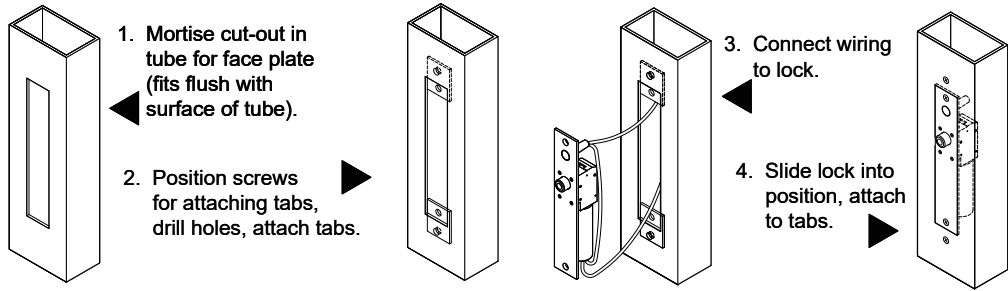
Series	1091 / 1291	1190 / 2090	1490 / 2490	FS23M
				
Type	Right Angle	Right Angle	Right Angle	Right Angle
Application	Standard 1¾"	Heavy Duty	Narrow 1½"	Dual Failsafe
Failsafe	1091AI	1190AI	1490AI	FS23MI
Failsecure	1291AH	2090AH	2490AH	-----
	CLICK TO VIEW	CLICK TO VIEW	CLICK TO VIEW	
Series	100 / 200	GL	PD2090	290
				
Type	Conventional	Specialty	Specialty	Specialty
Application	Mortise or Surface Mount	Gate Lock	Panic Device Top Latch Release	Micro Cabinet
Failsafe	110I, 160I, 180AI	GL160AI, GL163AI	-----	290
Failsecure	210H, 260H, 280AH	GL260AH, GL263AH, GL260MRAH	PD2090A	290
	CLICK TO VIEW	CLICK TO VIEW	CLICK TO VIEW	CLICK TO VIEW

 SPECIFICATIONS

FS23MI

Mount	Mortise
Operation	Failsafe
Bolt	5/8" Diameter Solid Stainless Steel
Bolt Throw	5/8"
Faceplate	8" x 1 1/2" x 1/8"
Strike	4" x 1 1/2" x 1 9/16"
ID Requirements	8" x 1 1/2" x 1 1/2"
Weight	2 lbs
Input	12/24 VDC ± 10%
Current Draw	900 mA @ 12 VDC 450 mA @ 24 VDC
Monitoring Contacts	SPDT 4 Amps @ 30 VDC Resistive

All Spacesaver locks are easily installed in any existing entrance merely by mortising out a cut-out, attaching the wiring, inserting the lock, and bolting it into position with two attaching tabs. Cutting studs are no longer a problem or expense.



CERTIFICATIONS

UL 10C Positive Pressure Fire Tests of Door Assemblies
ULC-S104 Standard Method for Fire Tests of Door Assemblies
ULC-S533 Egress Door Securing and Releasing Devices
CSFM Listed 3774-0324:0001

HOW TO ORDER


FOLLOW STEPS FOR ORDERING

 Designates optional step

1| SPECIFY MODEL

FS23MI Right Angle Bolt Lock, Dual Failsafe

2| SPECIFY FINISH

- V** 628 Dull Aluminum  *Standard*
- Y** 335 Dull Black
- D** 606 Dull Brass
- C** 605 Bright Brass
- G** 612 Dull Bronze
- F** 611 Bright Bronze
- H** 613 Dark Oil Rubbed Bronze
- Q** 626 Dull Chrome
- P** 625 Bright Chrome
- U** 630 Dull Stainless
- S** 629 Bright Stainless

3| SPECIFY OPTIONS

- D** Door Position Status (DPS)
- B** Bolt Position Status (BPS)

STEP NUMBER:	1	2	3
ORDERING EXAMPLE:	FS23MI	V	D B

RELATED PRODUCTS

REPLACEMENT POWER REGULATORS



Power regulators reduce the power consumption of the bolt locks after activation of the lock, allowing for a heat reduction to the bolt lock.

PR-1000 Bolt Lock Power Regulator, 3¾" x 1¼" x ½"